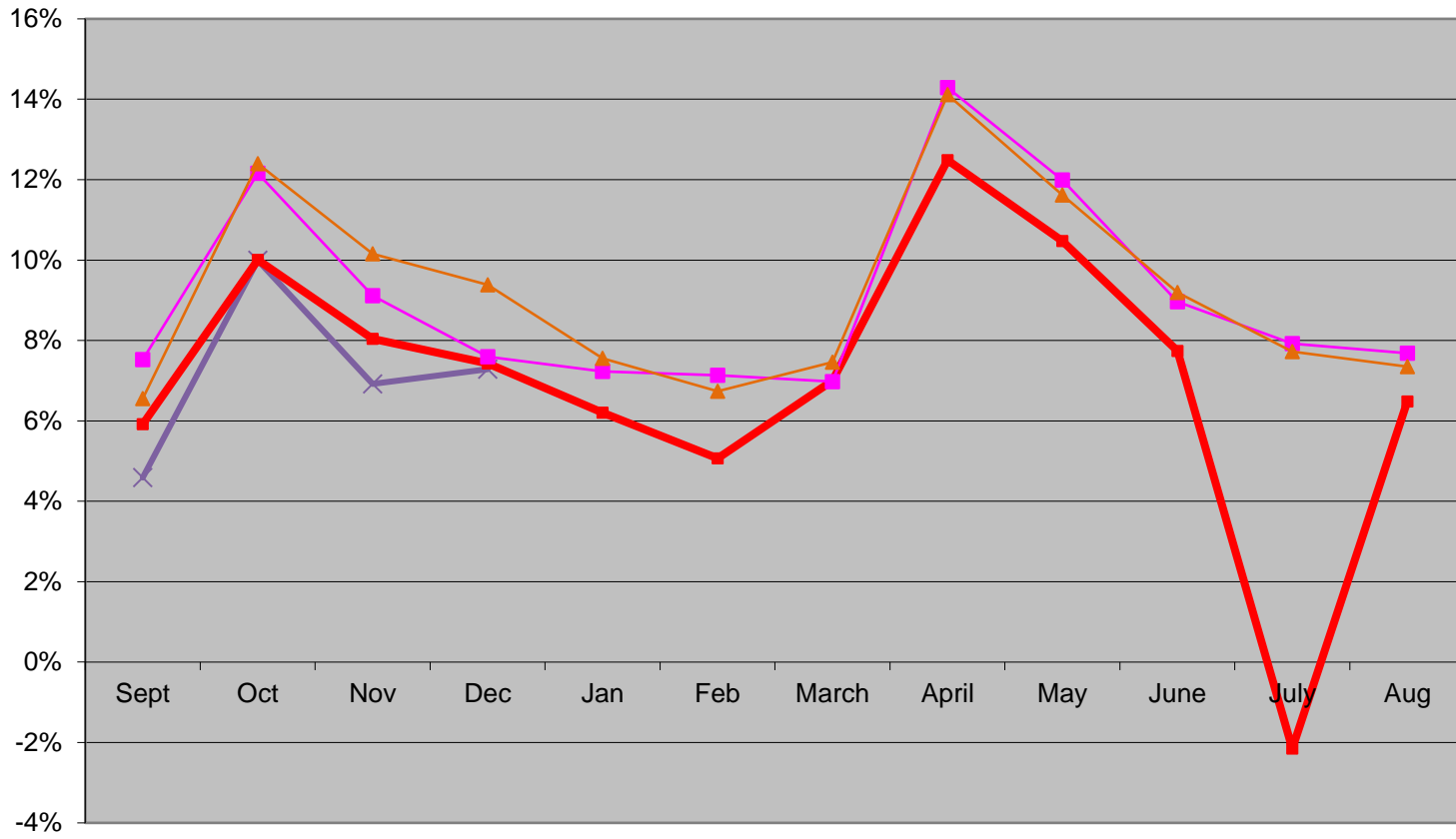


## Sequim School District #323

### General Fund Comparative As of December 31, 2016 and 2015

	2016-17 thru 12/31/2016			2015-16 thru 11/31/2015			% change 15/16 to 16/17
	Budget	Yr-To-Date	% Rec'd	Budget	Yr-To-Date	% Rec'd	
<b>Revenues</b>							
1000 Local Taxes	5,780,000	2,337,094	40.4%	5,780,000	2,336,631	40.4%	0.0%
2000 Local Support Nontax	432,900	468,679	108.3%	414,600	261,104	63.0%	79.5%
3000 State, General Purpose	18,075,946	6,198,403	34.3%	16,949,196	5,503,397	32.5%	12.6%
4000 State, Special Purpose	4,378,367	1,355,333	31.0%	4,191,922	1,312,402	31.3%	3.3%
5000 Federal, General Purpose	120,000	-	0.0%	120,000	-	0.0%	#DIV/0!
6000 Federal, Special Purpose	2,506,693	507,218	20.2%	2,255,650	672,665	29.8%	-24.6%
7000 Revenues Fr Oth Sch Dist	-	-		-	-		
8000 Rev Fr Oth Agncy & Assoc	-	-		-	2,819		-100.0%
9000 Other Financing Sources	-	-		-	-		
Total Revenues	31,293,906	10,866,728	34.7%	29,711,368	10,089,019	34.0%	7.7%
<b>Expenditures</b>							
	Budget	Yr-To-Date	% Spent	Budget	Yr-To-Date	% Spent	
00 Regular Instruction	17,413,391	5,624,814	32.3%	16,344,329	5,445,773	33.3%	3.3%
20 Special Ed Instruction	3,919,204	1,385,267	35.3%	3,622,143	1,322,867	36.5%	4.7%
30 Voc Ed Instruction	1,403,055	449,018	32.0%	1,362,528	418,949	30.7%	7.2%
50&60 Compensatory Ed Instruct	1,943,234	521,985	26.9%	1,786,570	470,514	26.3%	10.9%
70 Other Instructional Pgms	139,553	34,080	24.4%	439,679	47,947	10.9%	-28.9%
80 Community Services	19,365	2,879	14.9%	19,365	14,982	77.4%	-80.8%
90 Support	6,638,942	2,445,286	36.8%	6,201,256	2,107,882	34.0%	16.0%
Total Expenditures	31,476,744	10,463,329	33.2%	29,775,870	9,828,914	33.0%	6.5%
Transfers to Debt Service Fd	-	37,456		376,800	38,570	10.2%	
Revenues Over (Under) Expend	(182,838)	365,942		(441,302)	221,535		65.2%
Beginning Fund Balance	-	1,928,220		2,230,000	1,990,783		
Ending Fund Balance	(182,838)	2,294,163		1,788,698	2,212,318		3.7%
Fund Balance as % of Budgeted Expenditures	-0.58%	7.29%		6.01%	7.43%		

FUND BALANCE AS % OF TOTAL EXPENDITURES



—x— 2016-17    —■— 2015-16    —■— 2014-15    —▲— 2013-14

## REVENUES OVER (UNDER) EXPENDITURES

